



www.skylinkhome.com

## Audio Alarm

**MODEL : AA-433**



### **CUSTOMER SERVICE**

17 Sheard Avenue,  
Brampton, Ontario, Canada L6Y 1J3  
Tel : (800) 304-1187  
Fax : (800) 286-1320  
Email : support@skylinkhome.com

## SKYLINK TECHNOLOGIES INC.

### Your Guide to the **Audio Alarm**

**MODEL: AA-433**



The AA-433 Audio Alarm contains all the above items.

## ADDITIONAL ACCESSORIES

### **Audio Sensor (AS-433)**

- Detects alarm sound from existing security system alarm; sends signal to Dial-Alert.
- Eliminates need for monitoring service.
- 9V alkaline battery included.



### **Temperature Sensor (TS-101A)**

- Monitors temperature of a specific area (i.e., greenhouse, horse farms, laboratory etc.)
- Activates Security Control Panel (SC-001) or (AM-001 / ML-001) or Emergency Dialer (AD-433S or AD-105) when the temperature of the monitored area is above or below a preset temperature.
- Temperature range: -3°F (-19°C) to 157°F (69°C)
- Operates using lithium batteries included.



### **Flood Sensor (FS-433)**

- Place sensor along basement wall, near water heater, washing machine etc.
- Notifies Security Control Panel (SC-001) or Emergency Dialer (AD-433S) when water is detected.
- 12V alkaline battery included.



## ADDITIONAL ACCESSORIES

### **Security Control Panel (SC-001)**

- Four alarm modes (Day, Night, Away, Chime)
- Four zones, each zone controls up to 6 decives
- Reliable design with microcontroller
- 110dB siren



### **Silent Alarm (SW-433)**

- Plugs into any AC outlet, then plug light into Silent Alarm unit
- Light flashes when sensor(s)/transmitter(s) is (are) activated
- Silently alerts occupants including the hearing impaired



### **Vibration Sensor (VS-433)**

- Activates Emergency Dialer when vibration is detected
- attach vibration sensor to valuables, (stereo system, antiques)
- 9V alkaline battery included



### **Water Resistant Panic Button Transmitter (PT-434)**

- Activates Security Control Panel and Emergency Dialer by pressing the panic button when under duress
- Ideal for Seniors, Handicapped and Disabled
- Water resistant, carry transmitter all the time
- Operates using lithium batteries included



### **Keypad Control (KP-434)**

- Functions as an external keypad or secondary control location
- Use the keypad to arm/disarm the Audio Alarm (AA-433)
- Eliminates the need to walk through your premises to your Security Systems Control Panel
- Operates using lithium batteries included



## TABLE OF CONTENTS

OVERVIEW.....	4
PACKAGE CONTENTS.....	4
INSTALLATION.....	5-6
OPERATION OF THE AUDIO ALARM.....	7
LIGHTS AND SOUNDS.....	8
ACTIVATE/DEACTIVATE SYSTEM.....	9
KEYPAD TRANSMITTER .....	10
DELETE SENSORS AND TRANSMITTERS.....	11
BATTERY MAINTENANCE.....	12
ADDITIONAL ACCESSORIES (OPTION).....	13

## OVERVIEW

The Audio Alarm (AA-433) is designed to be used in conjunction with Skylink Security System (SC-10, SC-100 series, SC-1000 series) and any Skylink sensors/transmitters. When any of the Skylink Security Systems or sensors/transmitters are activated, the siren of the audio alarm will sound at 110dB. You can also set the audio alarm to chime so that when the sensors/transmitters are activated, the alarm will only emit one chime instead of sounding the siren. The audio alarm is capable of working with a combination of up to 15 Skylink security systems/sensors/transmitters (i.e. Door/Window Sensor, Motion Sensor, Temperature Sensor, Keychain Transmitter, Panic Transmitter etc. Refer to the back of this user's manual for more accessories).

## PACKAGE CONTENTS

All materials required for installation are included in this package:

One Audio Alarm (AA-433) - includes

- 1 antenna
- 1 AC adapter
- 1 9 volt alkaline battery (installed)



One pack of screws and anchors (for the Audio Alarm)

One template  
Double Sided Tape  
Warning Stickers  
Manual  
Warranty Card

## ADDITIONAL ACCESSORIES

Additional sensors and transmitters as well as add on accessories are available to work with your security system.

### **Motion Sensor (PS-434A)**

- Monitors area in a 110 degree ARC and up to 40 feet away from the sensor
- 9V alkaline battery included



### **Door/Window Sensor (WT-433)**

- Attaches to all doors, windows, entrances
- Add on as many magnetic switch (MS-001) as needed
- 12V alkaline battery included



### **Magnetic Switch/Magnet (MS-001)**

- Used in conjunction with Door/Window Sensor (WT-433)
- Add on for additional doors, windows



### **Keychain Transmitter (4B-434)**

- Activates Security Control Panel (SC-001) instantly by pressing panic button
- Arm/Disarm Security Control Panel (SC-001)
- Reliable design, crystal base transmission with microcontroller
- 12V alkaline battery included



### **Emergency Dialer (AD-433S)**

- When the alarm is activated, the Emergency Dialer automatically sends a preprogrammed voice message to as many as nine different phone numbers
- If any numbers are busy or there is no answer, the Emergency Dialer will go back and redial each number nine times or until there is an answer
- No need to pay monitoring fees
- Ideal for home, small business
- Operates by AC adapter with battery back up



## BATTERY MAINTENANCE

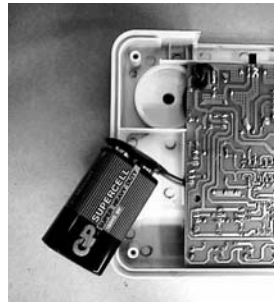
### Audio Alarm Battery

The Audio Alarm comes equipped with a 9 volt alkaline back up battery in case the electrical power is interrupted for any reason.

When the Audio Alarm battery is low, the “LO BATT” light goes on.

### To replace the Audio Alarm backup battery:

1. Take the Audio Alarm off the wall.
2. Turn off the unit and remove the AC adapter.
3. Remove the six screws then take off the back cover.
4. Disconnect old battery.
5. Connect new battery.
6. Replace the back cover and install the six screws.



The battery life, (9 volt alkaline battery), is approximately two years if only used for backup.

## INSTALLATION

Installation is done using the screws included. For your convenience, we have also included wall anchors and a template to aid in the installation of the Audio Alarm.

How to use the template to help in the installation:

1. Tape the template to the wall where you would like the Audio Alarm to be
2. Screw part way into the surface where the holes are marked on the template
3. Unscrew the screws and remove the template
4. Screw the Audio Alarm in place where you started the screws

We recommend that you install the Audio Alarm first with the double sided tape included and once you are satisfied with the positioning, reinstall using the screws.

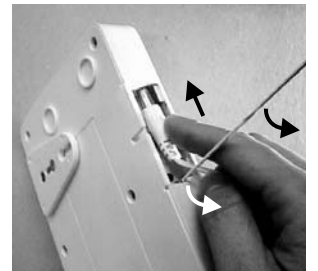
### INSTALLING THE AUDIO ALARM

The Audio Alarm is water resistance so it can be installed indoors or outdoors within access to an electrical outlet. **Be careful that the AC adapter wire doesn't guide rain water to the DC JACK located at the bottom of the Audio Alarm.**

There are two ways to attach the Audio Alarm to the wall:

### Hanging it on two stationary screws

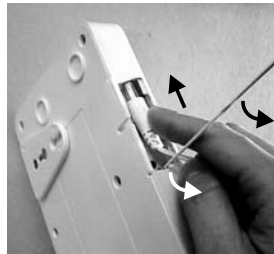
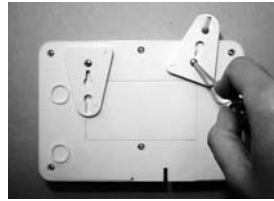
1. Using the template provided, insert the two screws into the wall.
2. Align the two top keyholes on the triangular tabs located at the back of the Audio Alarm with the screws on the wall.
3. Gently push the Audio Alarm on to these two screws.
4. Open the small door on the bottom of the Audio Alarm.
5. Insert the AC adapter and the antenna in the appropriate holes.
6. Close the small door so that the AC adapter and the antenna are running through the appropriate spaces in the door.



## INSTALLATION

### Screwing the unit to the wall

1. Unscrew the two triangular hanging tabs located at the back of the Audio Alarm.
2. Turn them around and slide them back into place so that the two tabs are pointing up and the two keyholes are visible from the front.
3. Position the Audio Alarm on the wall and insert the two screws in the two keyholes. Do not insert the screws all the way into the wall, leave some room on the screw to hang the Audio Alarm. Use the template if needed.
4. Open the small door on the bottom of the Audio Alarm.
5. Insert the AC adapter and the antenna in the appropriate holes.
6. Close the small door so that the AC adapter and the antenna are running through the appropriate spaces in the door.

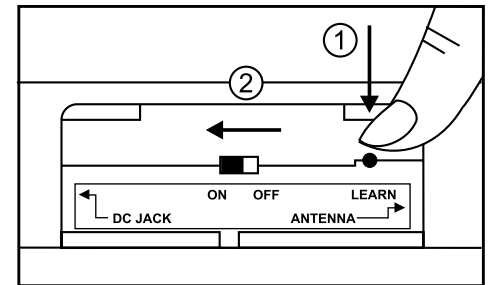
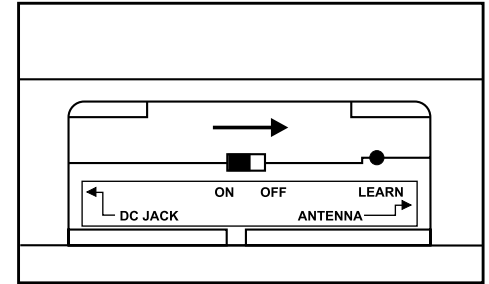


## DELETE SENSORS AND TRANSMITTERS

You cannot delete one sensor/transmitter from the Audio Alarm at a time. You must clear all the sensors and transmitters that are currently communicating with the Audio Alarm, then re-program the ones you want to keep.

### Delete All Sensors and Transmitters

1. Turn the Audio Alarm off by sliding the switch on the bottom of the Audio Alarm so that the "ON" light is not lit.
2. Press and hold the learn button found on the bottom of the Audio Alarm.
3. While holding the learn button, turn on the Audio Alarm by sliding the switch on the bottom.
4. You will hear a long beep followed by a series of short beeps. When you hear the short beeps, release the learn button.



You have now cleared all sensors and transmitters from communicating with the Audio Alarm.

## KEYPAD TRANSMITTER

When the Keypad Transmitter (KP-434) is used in conjunction with the Audio Alarm, it functions the same as the Keychain Transmitter (4B-433A or 4B-434). You are able to arm and disarm the audio alarm, activate the siren using the panic button, and turn on/off the chime mode.



Panic button (the red key on the top right of the keypad) - instantly activates the alarm, whether the audio alarm is in arm mode or not. It will always activate the alarm when the "ON" light is lit on the audio alarm.

To arm the audio alarm using the keypad transmitter:

1. Enter the current MPIN on the keypad transmitter (the MPIN is factory programmed with 0 0 0).
2. Press [B], [C], the "ON" light on the keypad transmitter will flash and emit a long beep. The "ARM" light on the audio alarm will be on. The audio alarm is now armed.

To disarm the audio alarm or terminate the siren:

1. Enter the current MPIN on the keypad transmitter.
2. Press [#], the "ON" light on the keypad transmitter will flash and emit a long beep. The "ARM" light on the audio alarm will be off. The audio alarm is now disarmed, or the siren is turned off.

When the audio alarm is on but not armed and a remote sensor is activated, the audio alarm will emit one chime, (beep) and the "ON" light will flash once. You may deactivate the chime by pressing [Current MPIN], [C] on the keypad transmitter. For example, if people are using the front door constantly, you may choose to turn off the chime sound.

## OPERATION OF THE AUDIO ALARM

The Audio Alarm is designed to work with Skylink Security System (SC10, SC-100 series, SC-1000 series) and all the Skylink sensors / transmitters. If you are using the Audio Alarm (AA-433) to communicate with a Skylink sensor (i.e. door/window sensor) and not a Skylink Security System, you will need a Keychain Transmitter (4B-433A or 4B-434) or a Keypad Transmitter (KP-434) to arm/disarm the Audio Alarm. These keychain transmitters are included in the Security System SC-100 and SC-10, you may also purchase these keychain transmitters and keypad transmitter separately. Before you can activate the audio alarm using the keychain transmitter or keypad transmitter, you must first "learn" the transmitter to the audio alarm so that they can communicate with each other.

### Program the keychain transmitter to the audio alarm

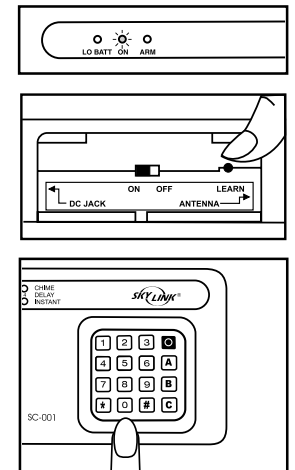
You may program as many as 15 Skylink sensors/transmitters to the audio alarm. Once any of these sensors/transmitters are activated, the sensor will send a signal to the audio alarm so that the siren (or chime) will sound.

### Program sensors / transmitters to the Audio Alarm

1. Turn on the Audio Alarm, (slide the button on the bottom of the unit to "ON"), allow 30 seconds for the Audio Alarm to warm up. With only the "ON" light lit on the Audio Alarm, press and hold the learn button located on the bottom of the Audio Alarm.
2. While pressing down on the button, activate the sensors or transmitters that you want to program to the audio alarm (i.e. keychain transmitter). If you are programming the keychain transmitter, you can activate the transmitter by pressing any one of the buttons. If you are programming the keypad transmitter, you may activate it by pressing the panic button.
3. If a connection has been made, the Audio Alarm will stop beeping and make a continuous tone until the black button on the Audio Alarm is released.

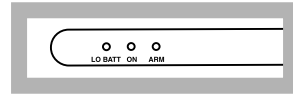
### Program control panel (SC-001) to the Audio Alarm (AA-433)

1. Turn on the Audio Alarm, (slide the button on the bottom of the unit to "ON"), allow 30 seconds for the Audio Alarm to warm up. With only the 'ON' light lit on the Audio Alarm, press and hold the learn button located on the bottom of the Audio Alarm.
2. While pressing down on the button of the Audio Alarm, enter the current MPIN (Master Personal Identification Number) on the Security Control Panel (SC001).
3. Press [B] [B] on the Security Control Panel.
4. If a connection has been made, the Audio Alarm will stop beeping and make a continuous tone until the learn button on the Audio Alarm is released.



## LIGHTS AND SOUNDS

### LIGHTS



ON light lit - power is being sent to the Audio Alarm.

ALL BELOW SCENARIOS INCLUDE THE "ON" LIGHT LIT

LO BATT light off - the Audio Alarm is being powered by electrical current and/or the battery.

LO BATT light on - the Audio Alarm is being powered by electrical current only, the battery is weak and needs to be replaced.

"ARM" light on - the Audio Alarm is **armed** and **will sound** when any sensor is activated.

"ARM" light off - the Audio Alarm is **not armed** and **will not sound** when any sensor is activated.  
- however, it will respond to any of the buttons on the Keychain Transmitter and the panic button on any of the Security Systems.

### SOUNDS

You are able to turn on/off the short beep sound made by the Audio Alarm when any of the sensors are activated, by pressing button 3 on the Keychain Transmitter (4B-433A or 4B-434 sold separately).

One long beep - occurs when the Audio Alarm is turned on with the button on the bottom of the unit.

One short beep - when a sensor is activated and the Audio Alarm is on but not armed.  
- anytime buttons # 1, 2 or 3 is pressed on the Keychain Transmitter (4B-433A or 4B-434) and the Audio Alarm is on but not armed.

## ACTIVATE AND DEACTIVATE THE SYSTEM

Now that the system is installed and the sensors are communicating with the Audio Alarm, it is time to learn how to arm and disarm the Audio Alarm.

The only way to arm and disarm the Audio Alarm is via the Keychain Transmitter and Keypad Control (option).

### KEYCHAIN TRANSMITTER (4B-433A) OR (4B-434)



Turns off the siren and/or disarms the system

Arms the system

Activate/deactivate the chime sound made when a sensor is activated and the Audio Alarm is not armed

Panic button

When the Audio Alarm is ON, the four buttons on the transmitter do the following:

Panic Button - instantly activates the alarm, whether the Audio Alarm is in arm mode or not. Will always activate the alarm when the "ON" light is lit on the Audio Alarm.

Button #1 - this button will arm the Audio Alarm so that the **Audio Alarm will communicate** with the sensors and transmitters.

Button #2 - when the system is on but not armed and a remote sensor is activated, the Audio Alarm will emit one chime, (beep). Button #2 allows you to activate or deactivate the chime sound. For example, if people are using the frontdoor constantly, you may choose to turn off the chime sound.

Button #3 - when the siren is sounding, this button will turn off the siren and disarm the Audio Alarm.  
- when the siren is not sounding but the system is armed, this button will disarm the Audio Alarm.