

# LRA-PBTXA-L

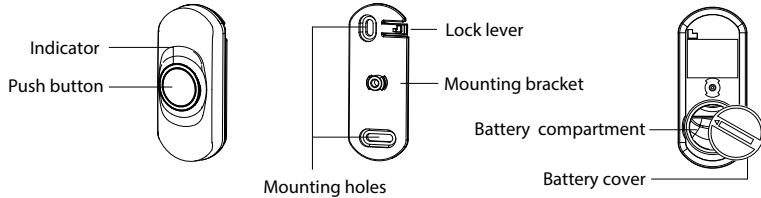
## Owner's Manual

This device complies with Part 15 of the FCC rules, Operation of this device is subject to the following conditions: 1. This device may not cause harmful interference. 2. This device must accept any interference, including interference that may cause undesired operation.

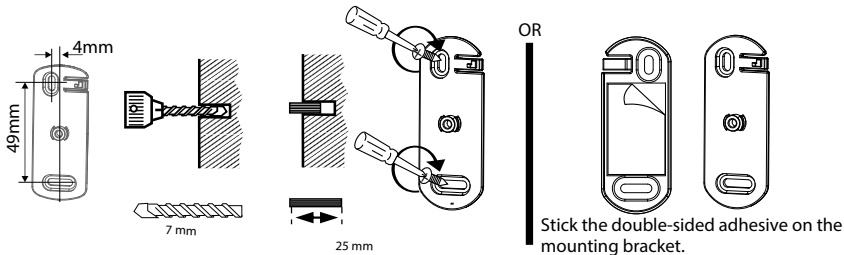
### Important Notes

- The "L" version (LRA-PBTXA-L) must be programmed to a "L" version receiver.
- The non-L version or the transmitter (LRA-PBTXA) must be programmed to a non-L version receiver.
- This manual references setup & installation of the LRA-PBTXA-L push button. For programming this push button to the a LRA receiver consult the specific information for the receiver.
- The programming instructions will reference a point where you must "trigger" the transmitter. For this push button simply press the button (ensure battery is installed).
- We recommend you insert the battery & program prior to mounting.

### LRA-PBTXA Wireless Push Button



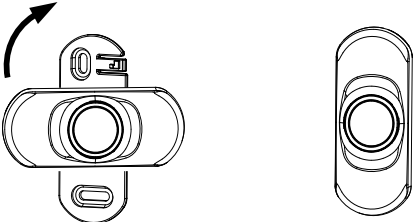
### LRA-PBTXA Mounting Options



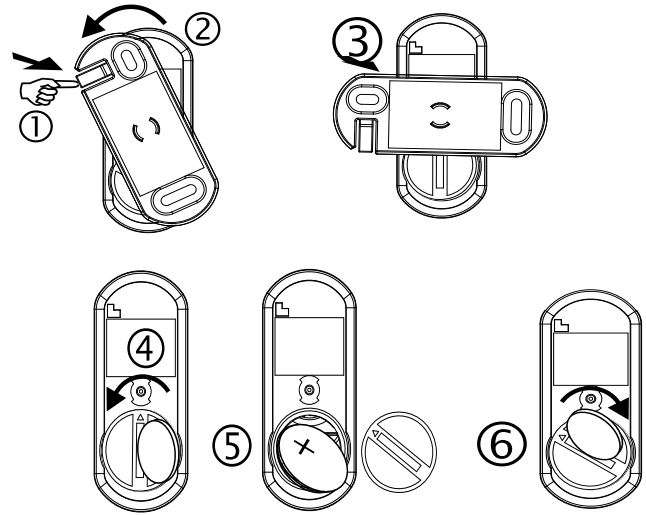
Prior to installing the push button, we recommend you program it to the receiver & test it to ensure the location where you plan to mount the push button is within the range of the receiver(s) through testing.

First mount the base mounting plate by using the supplied wall anchors & screws or the double sided tape. Once the mounting plate is mounted securely attached to the wall, place push button on mounting plate horizontally (see image below).

Finally, rotate the push button up & to the right until you hear/feel it click into place.



### Battery Installation



- Use your finger to unlock the lock lever by lifting the tab (figure 1).
- While lifting the tab, simultaneously rotate the mounting bracket (back piece) 90 degrees (figure 1,2).
- Remove the mounting bracket from the unit (figure 3).
- Insert a coin into the battery cover & turn to the left to unscrew cover (figure 4).
- Insert a CR2032 battery to battery compartment provided (figure 5).
- Replace battery cover. Insert coin & turn to the right (figure 6).

### Low Battery Indicator

When the push battery battery is weak the zone on the receiver it is programmed to will notify you. On the LRA-DCRX, for example, the zone light the button is programmed to will occasionally flash to notify you. On the LRA-DCRXS, a red LED will appear to notify you.

### TECHNICAL SUPPORT

If you encounter any difficulty in the operation of this product after reading the manual, please contact us. You can reach us by phone at 904-245-1184 from 8:00 AM to 5:00 PM Monday through Friday (Eastern Standard Time). We will be happy to answer your questions and help you in any way we can.

### WARRANTY

Safeguard Supply warrants this product to be free of defects in material and workmanship for a period of one year from the date of purchase. This warranty does not cover damage resulting from accident, abuse, act of God or improper operation. If this product does become defective, simply return it to Safeguard Supply. Please include a note describing the troubles along with your name and return address as well as the original sales receipt. If the product is covered under warranty it will be repaired or replaced at no charge. If it is not covered by warranty, you will be notified of any charges before work is done.

**Safeguard Supply**  
2260 Moon Station Ct. NW #110  
Kennesaw, GA 30144  
[www.safeguardsupply.com](http://www.safeguardsupply.com)