

# ERA-PBDCR

## Owner's Manual

This device complies with Part 15 of the FCC rules, Operation of this device is subject to the following conditions: 1. This device may not cause harmful interference. 2. This device must accept any interference, including interference that may cause undesired operation.

### Helpful Notes:

- Each receiver is capable of pairing with four (4) transmitters per zone.
- Each zone features 1 x 12V DC output.
- Output duration for the 12V DC output may be set to 5 sec, 10 sec, 1 min, & 2 min. The receiver features 1 x C-Form relay assignable to one or multiple zones & will take on the duration of the 12V DC output.
- Volume control: 4 levels plus mute, plus off.
- Each transmitter must be paired to a zone on the receiver.
- Each zone is programmed to the "ding-dong" sound from the factory. User may change this melody.
- When transmitter battery is low, it sends a signal to the receiver when triggered & the corresponding LED on the receiver will continue to flash for 10 minutes.
- The ERA-PBTX is a push button transmitter that must be programmed to a ERA compatible receiver to operated.
- Push button measures 3.00" H x 2.25" W x 1.75" D.
- The halo ring around the center push will illuminate dimly for visibility at night (this feature consumes very little power.)
- When triggered (center push button is pressed) the center halo illuminates brightly for approximately 2 seconds.
- The push button is outdoor rated and contains a silicone gasket to keep moisture out. Mount with the small weep hole pointing down to ensure any moisture in the unit evaporates out.

### Battery Installation:

1. Open the front cover by inserting the included screwdriver into the square hole on the bottom of the unit (figure 1) & gently push & then separate the top & bottom halves of the case.
2. Remove top part of case from lower part of case (figure 2).
3. Install the included CR2450A battery into the holder with positive (+) side of the battery facing up (figure 2).
4. Test the battery by pressing the center push. The green halo should illuminate for approximately 2 seconds, signaling transmission. Note: Program the push button to a compatible receiver PRIOR to mounting the push button.

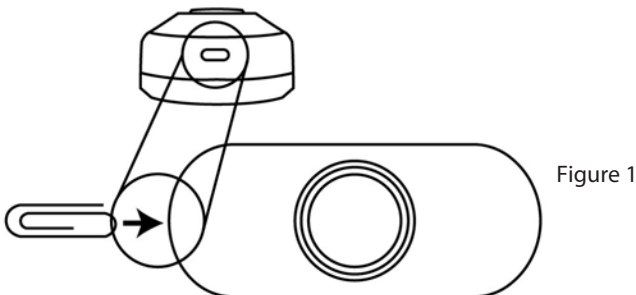


Figure 1

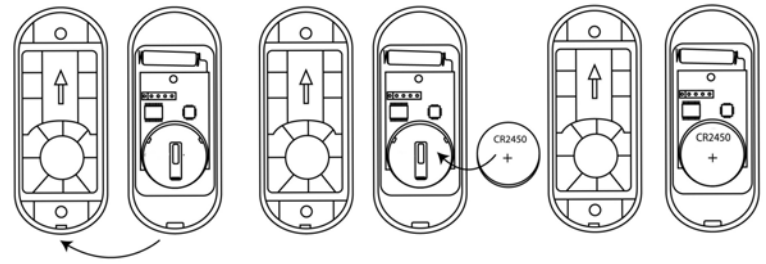


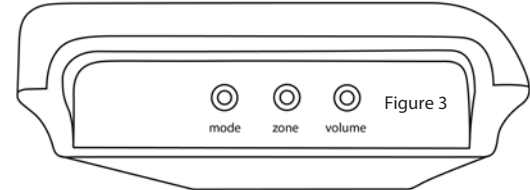
Figure 2

### Pair Transmitter to Receiver:

(Always test unit prior to installation)

The transmitter works with the ERA-DCRX receiver & basic programming calls for the user to pair the transmitters with a receiver & select a melody for the transmitter to instruct the receiver to play when triggered. For quick setup, however, each zone defaults to a basic "ding-dong" sound allowing you to easily pair the transmitter for a faster set up process.

1. On the ERA-DCRX receiver, hold down the "mode" (left button in figure 3 below) button until you hear a short tone sound & the "zone 1" LED flashes (approx 3 sec).
2. If you are programming the transmitter to zone 1 press the button on your transmitter. You will hear the receiver play a short musical note (zone 1 will continue to flash).
3. To program a transmitter to a different zone, press the "zone" button on the receiver to scroll to the appropriate zone. The zone you want to program will flash. Repeat step 2 above.
4. Once you have programmed all the zones move to the next step.
5. To exit program mode, hold down the "mode" button until you hear a short tone sound (approx 3 sec)



### Changing the Zone Melody:

By default, each zone is programmed by the factory to play the ding-dong sound

1. Hold down the "zone" button until you hear a short tone & all LEDs on front panel of receiver are red (approx 3 seconds). The zone you are programming will flash.
2. Press the "volume" button to scroll through the 12 available melodies for selection. Once you find a melody you like, move to step 3.
3. Press the "zone" button to scroll to the next zone & repeat step 2 to program a melody to other zones.
4. Once you have programmed a melody to all necessary zones, move to step 5.
5. Hold down the "zone" button until you hear a short tone sound (approx 3 seconds) notifying the receiver is out of melody programming mode.

### Volume, Mute, Off:

The volume button on the side of the receiver controls the four different volume levels, mutes & turns off the receiver. Pushing the volume button controls these functions.

- When all four zone LED lights are red, this indicates maximum volume.
- Three zone LED lights indicate the third volume level.
- Two zone LED lights indicate the second volume level.
- One zone LED light indicates the minimum volume level.
- No zone LED lights & a red power indicator light means the

## Low Battery Indicator

When the battery in the ERA-PBTX is low & needs to be replaced, it will signal the receiver to double play the programmed melody on the receiver when triggered.

For example, if you have programmed the "ding-dong" sound for the push button to play on the receiver, when the battery on the push button is low, the receiver will play "ding-dong...ding-dong" when triggered, notifying you to change the battery in the push button.

## Erasing Programming (memory):

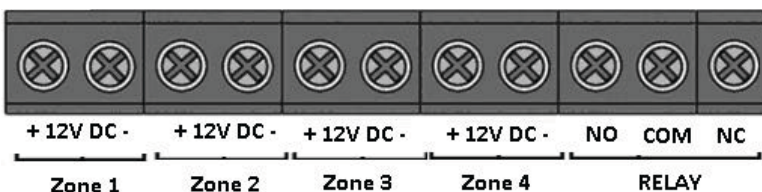
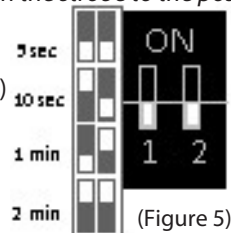
1. Hold down "mode" button until you hear a short tone & the zone 1 LED flashes.
2. Hold down the "mode" & "volume" button simultaneously until all LEDs stop flashing & you hear a short melody sound (approximately 5 seconds).
3. All LEDs will stop flashing & only the green LED power indicator will display. The memory is now erased.

## Using 12V DC Outputs:

- Each zone on the ERA-DCRX features a live 12V DC output.
- The output duration may be set to 5 seconds, 10 seconds, 1 minute or 2 minutes using the dip switches located inside the receiver.
- The output duration settings will apply to all zones & the C-Form Relay.
- The C-Form Relay may be associated with a specific zone or multiple zones.
- 12V DC output current: 400mA maximum.

## Connecting a 12V DC Device:

1. Unplug the receiver.
2. Separate top receiver case from bottom receiver case.
3. Locate terminal block (see figure 4) located on the bottom of the pc board.
4. Loosen screws for the zone(s) that you are connecting a device to.
5. Wire the external 12V DC into the terminal connection blocks that corresponds to the respective zone. *For example, if a push button is paired to zone 1, and you want a strobe to flash for zone 1, wire the strobe into the terminal block for zone 1.*
6. Observe polarity when necessary. *For example, for a strobe light, ensure you are connecting the positive wire on the strobe to the positive terminal on the receiver.*
7. Re-tighten screws on terminal block.
8. Adjust output duration as needed (figure 5)
9. Snap cover back together.
10. Plug in receiver.

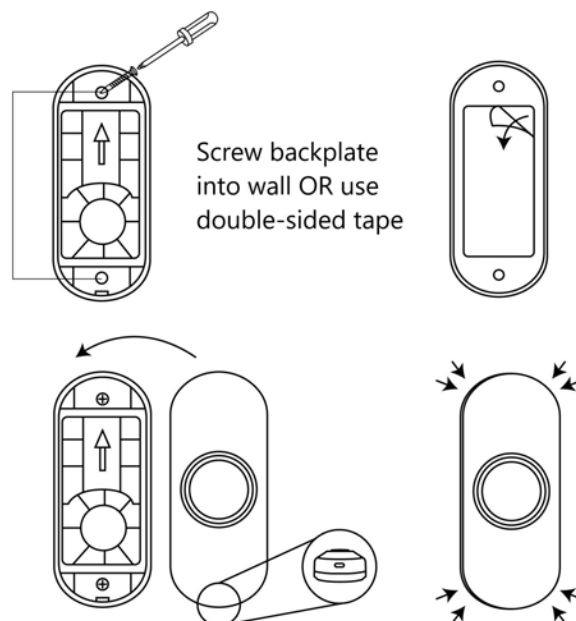


(Figure 4)

## Mounting the Push Button:

Ensure you have programmed & tested the push button prior to mounting. There are two mounting options for the ERA-PBTX. The first method is to mount the unit using the supplied screws. The second is using the supplied double-sided tape.

1. Open the front cover by inserting the included screwdriver into the square hole on the bottom of the unit (figure 1 above) & gently push in to separate the top & bottom half of the case.
2. Remove top half of case from lower half of case.
3. Place back cover of push button on wall where you want to mount it. The back cover may be mounted using the supplied screws or double sided mountin gtape.
4. Ensure the arrow inside the back cover is pointing up.
5. Mount back half of case on wall.
6. Place top half (with battery installed) over bottom half. Make sure the small opening (see figure 1 above)on top half is pointing down. Place bottom of the top half over the small protruding clip on bottom half & snap into place.



## TECHNICAL SUPPORT

If you encounter any difficulty in the operation of this product after reading the manual, please contact us. You can reach us by phone at 904-245-1184 from 8:00 AM to 5:00 PM Monday through Friday (Eastern Standard Time). We will be happy to answer your questions and help you in any way we can.

## WARRANTY

Safeguard Supply warrants this product to be free of defects in material and workmanship for a period of one year from the date of purchase. This warranty does not cover damage resulting from accident, abuse, act of God or improper operation. If this product does become defective, simply return it to Safeguard Supply. Please include a note describing the troubles along with your name and return address as well as the original sales receipt. If the product is covered under warranty it will be repaired or replaced at no charge. If it is not covered by warranty, you will be notified of any charges before work is done.

Safeguard Supply  
2260 Moon Station Ct. NW #110  
Kennesaw, GA 30144  
www.safeguardsupply.com